

Sea Eagles Shipping (L.L.C)

Sharjah Hamriyah, Plot no. HD-09A

P.O. Box: 41900, Sharjah, UAE.

Tel.: +971 6 5260896

Fax: +971 6 5260897



شركة نسور البحر للملاحة ذ.م.م

الحميرية الشارقة، قطعة رقم. أ.ج.دي-٠٩-أي

ص.ب.: ٤١٩٠٠٠- الشارقة - أ.ع.م.

تليفون: +٩٧١ ٦ ٥٢٦٠٨٩٦

فاكس: +٩٧١ ٦ ٥٢٦٠٨٩٧

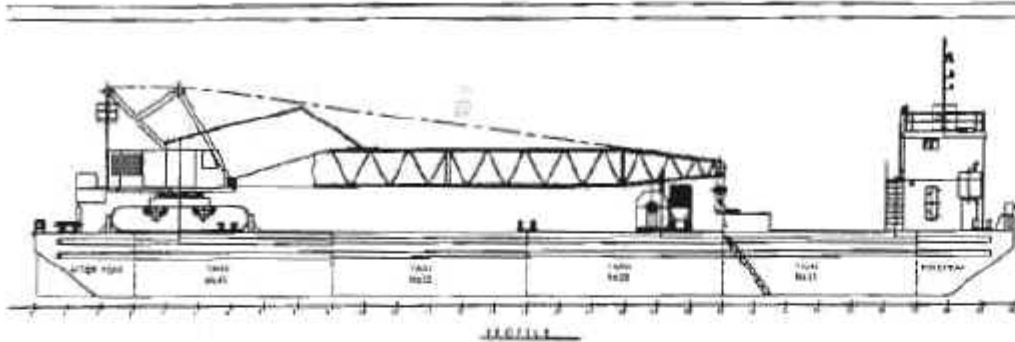
Email: seaeagle@emirates.net.ae

Website: www.seaeaglesshipping.net

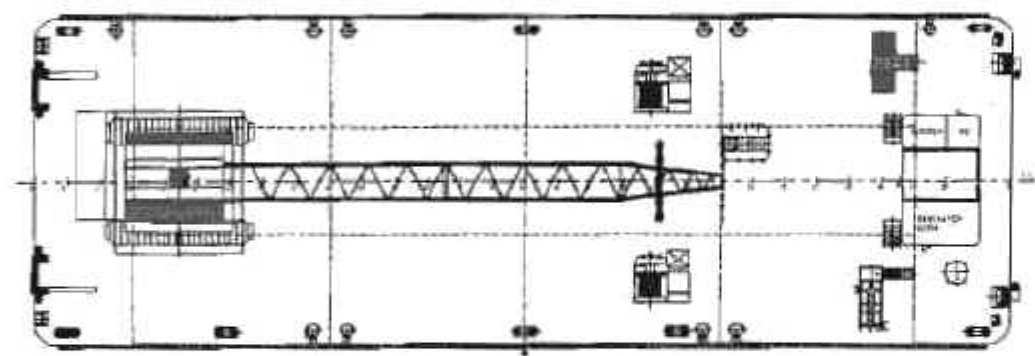
ZR 111



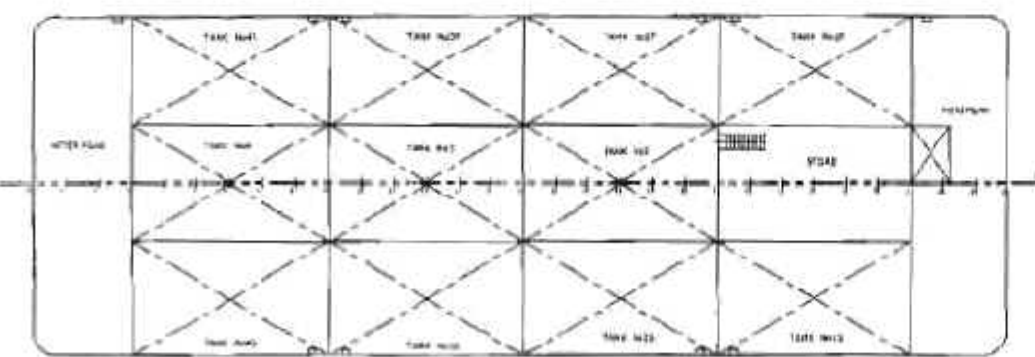
TYPE	WORK BARGE WITH 4 MOORING POINT
FLAG	U.A.E
PORT REGISTRY	DUBAI
LOA	45.72 Mtrs.
BREADTH	15.24 Mtrs
DEPTH	3.048 Mtrs.
GRT	553 Tons
NRT	553 Tons
YEAR OF BUILT	1984
CLASS	ABS
ACCOMMODATION	14 Pax
CRAWLER CRANE	150 Tons Crane with ROBWAY TENSION SYSTEM
SHEER LEGS	FITTED WITH 2 SHEER LEGS ON THE STERN OF SWL 125 TONS EACH, TOTAL LIFT 250 TONS SUPPORTED BY ROBWAY TENSION DEVICE
LAUNCHING WINCH	2 NOS. 30 TONS PULL DIESEL DRIVEN
ANCHOR	2 TONS ANCHOR (4 NOS)
ANCHOR WINCH	DOUBLE DRUMS WINCH (P+S) ELECTRIC DRIVEN, 9 TONS PULL 25 MM WIRE OF UPTO 900 Mtrs.



1:100



MAIN DECK



DATE	DESCRIPTION OF REVISION	REVISION	APPROVED	DESIGNED

DUBAI SHIP BUILDING & ENGG. (LLC)
 PO BOX No. 35115 DUBAI, U.A.E.
 TEL: +971-4-3616133 FAX: +971-4-3616138

DATE	10/20/2010
SCALE	1:100
SHEET	2 OF 2